

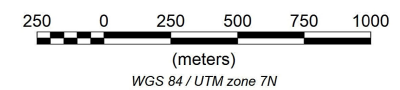
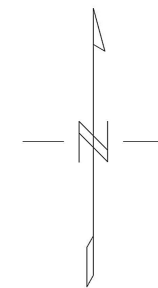
Survey and Equipment:

-Survey flown on July 20, 2011 to July 21, 2011.

-Survey Base: Black Hills Creek, YT

-Scintrex CS-3 cesium vapor magnetic sensor used to sample the Earth's magnetic field at 10Hz.

-All radiometric data sampled at 1Hz by 16.8L of NaI downward looking synthetic crystal and 4.2 L of upward looking synthetic crystals.



Solomon Resources Ltd.

Ten Mile - Block A

Total Magnetic Intensity

Created By: Precision GeoSurveys Inc.

July 2011

Precision
GeoSurveys Inc.

TMI